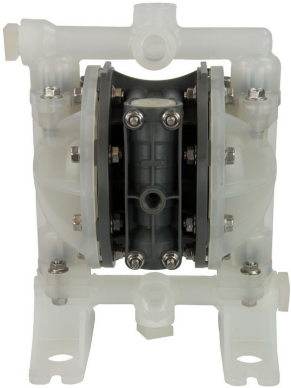


EXPLODED VIEW & PARTS LISTING

Model: G15 Pure Polypropylene Series 

Air Operated Double Diaphragm Pump



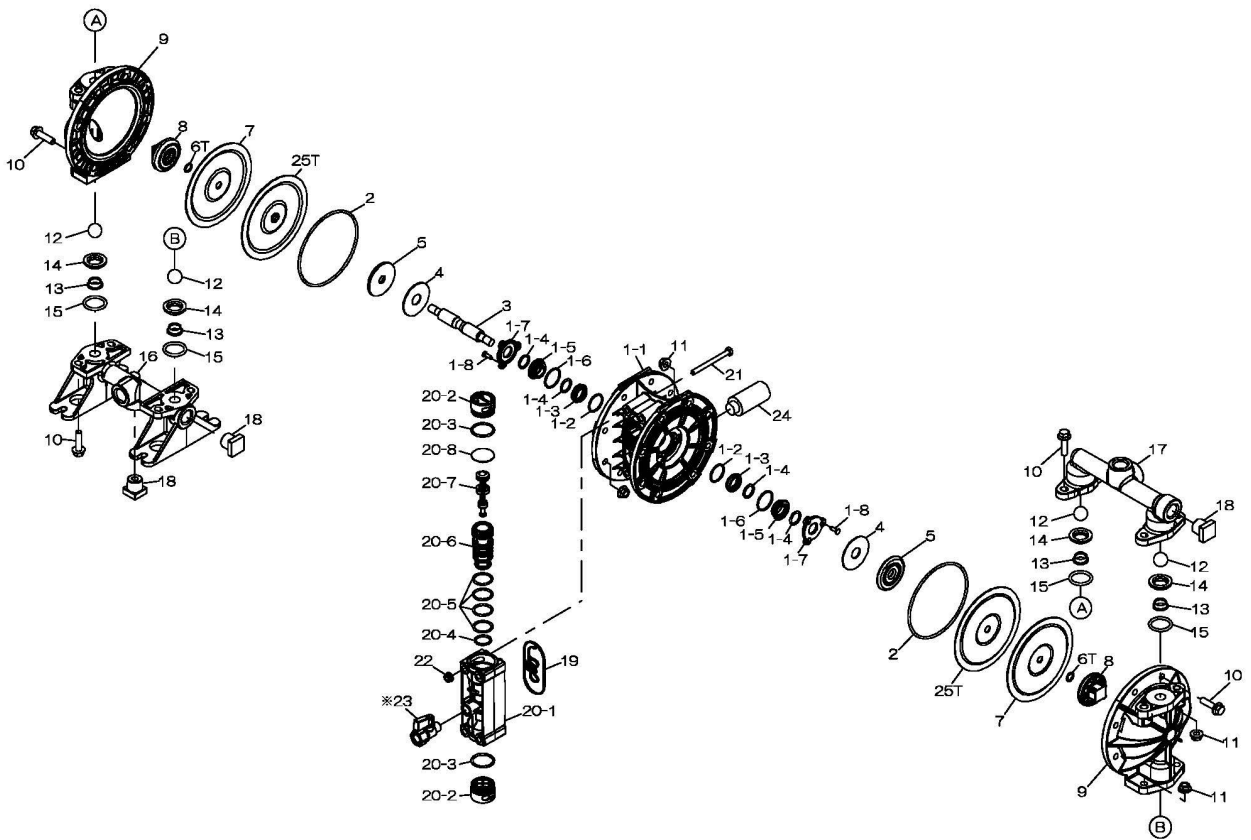
To Purchase:

- ☎ 800-990-7867
- ✉ sales@yamadapump.com
- 📍 Find My Rep

More Information:

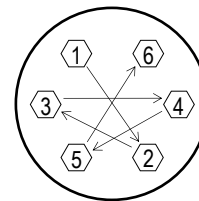
- ▶ YouTube: @yamadapump
- 🌐 yamadapump.com
- Data Sheets | CAD Drawings | Manuals Literature | BOM | Performance Curves*

Trial Program



Air Operated Double Diaphragm Pump

	G15PH11	G15PN11	G15PS11	G15PT11			
	854979	854981	854917	854916			
REF. NO.	PART NO.	PART NO.	PART NO.	PART NO.	DESCRIPTION	QTY.	REORDER
1	805217	805217	805217	805217	BODY ASSY	1	
1-1	773410	773410	773410	773410	CENTER BODY	1	
1-2	686893	686893	686893	686893	O RING	2	
1-3	773385	773385	773385	773385	GUIDE BUSHING A	2	
1-4	640015	640015	640015	640015	O RING	4	
1-5	780301	780301	780301	780301	GUIDE BUSHING B	2	
1-6	684900	684900	684900	684900	O RING	2	
1-7	773384	773384	773384	773384	GUIDE BUSHING STOPPER	2	
1-8	686894	686894	686894	686894	TAPPING SCREW	6	
2	640147	640147	640147	640147	O RING	2	
3	717100	717100	717100	717100	CENTER ROD	1	
4	773278	773278	773278	773278	CUSHION	2	
5	716923	716923	716923	716923	CENTER DISK	2	
6T	—	—	—	643007	O RING	2	
7	773316	773277	773315	773276	DIAPHRAGM	2	
8	773391	773391	773391	773391	CENTER DISK	2	
9	780303	780303	780303	780303	OUT CHAMBER	2	
10	686892	686892	686892	686892	FLANGED BOLT	24	
11	686032	686032	686032	686032	FLANGED NUT	24	
12	773374	773422	773424	773423	BALL	4	
13	773430	773430	773430	773430	VALVE SEAT B	4	
14	773429	773429	773429	773429	VALVE SEAT A	4	
15	640025	640025	684114	643025	O RING	4	
16	780307	780307	780307	780307	MANIFOLD B	1	
17	773395	773395	773395	773395	MANIFOLD A	1	
18	773393	773393	773393	773393	PLUG	3	
19	773407	773407	773407	773407	GASKET	1	
20	805210	805210	805210	805210	VALVE BODY ASSY	1	
20-1	833226	833226	833226	833226	VALVE BODY	1	
20-2	773383	773383	773383	773383	CAP	2	
20-3	685135	685135	685135	685135	O RING	2	
20-4	685453	685453	685453	685453	O RING	1	
20-5	771080	771080	771080	771080	O RING	4	
20-6	780302	780302	780302	780302	SLEEVE	1	
20-7	805208	805208	805208	805208	SPOOL ASSY	1	
20-8	773428	773428	773428	773428	CUSHION	1	
21	621115	621115	621115	621115	BOLT	4	
22	684086	684086	684086	684086	FLANGED NUT	4	
*23	686826	686826	686826	686826	BALL VALVE	1	
24	686762	686762	686762	686762	MUFFLER	1	
25T	—	—	—	773447	BACK UP DIAPHRAGM	2	
KIT	KG15-PH	KG15-PN	KG15-PS	KG15-PT	LIQUID END KIT		
KIT	KG15-AM-P				AIR MOTOR KIT		



Tightening torque:

Center Rod	177 in-lbf {20 N-m}
Out Chambers	89 in-lbf {10 N-m}
Manifold Retainer Bolts or Nuts	89 in-lbf {10 N-m}

General Tools:

- Socket wrench - 10mm, 12mm
- Hexagonal box wrenches - 5mm
- Open-end wrench - 12mm, 22mm
- Phillips head screw driver
- Pliers

Special Tools/Parts (sold separately):

- Sleeve remover (713148)
- Ball Valve (686826)

Miscellaneous:

- Assembly Oil - turbine oil class 1 (equivalent to ISO VG32 grade)
- Urea grease grade (NLGI) No. 2
- Thread locking agent (equivalent to LOCTITE® 222)

*NO. 23 - Ball Valve sold separately

Customer Notes

Model #: _____

Description: _____

Serial #: _____

Date Installed: _____

Department Location: _____

Tag/Project: _____